


UH Maui College
April 13, 2012
John Morton, Vice President for Community Colleges



UNIVERSITY
of HAWAII
COMMUNITY COLLEGES



Hawai'i Graduation Initiative



2



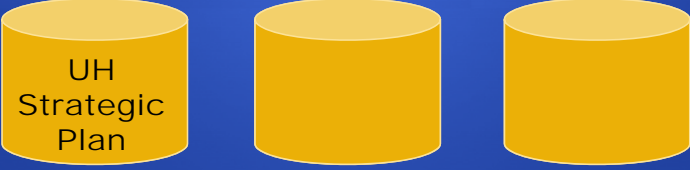
UH Strategic Plan

- Incremental Outcomes 2008 to 2015
- Focused on Graduation Numbers
 - ✓ Overall Degrees and Certificates
 - ✓ **Native Hawaiian**
 - ✓ STEM
 - ✓ Targeted Workforce Shortages

3



Hawai'i Graduation Initiative



UH Strategic Plan

4



Achieving the Dream

- Data Driven
- Focused on Native Hawaiian Student Success
- Added Dimension of
 - ✓ Remedial/Developmental
 - ✓ Student Momentum
 - ✓ Transfer as Success


5



Hawai'i Graduation Initiative



6




State P-20 Initiative

- Administratively within UH
- Brings in K-12 partners
- Stated goal of 55% of population having college credential
- Added dimension of
 - ✓ College readiness
 - ✓ Workforce and economic development
 - ✓ Broader community engagement

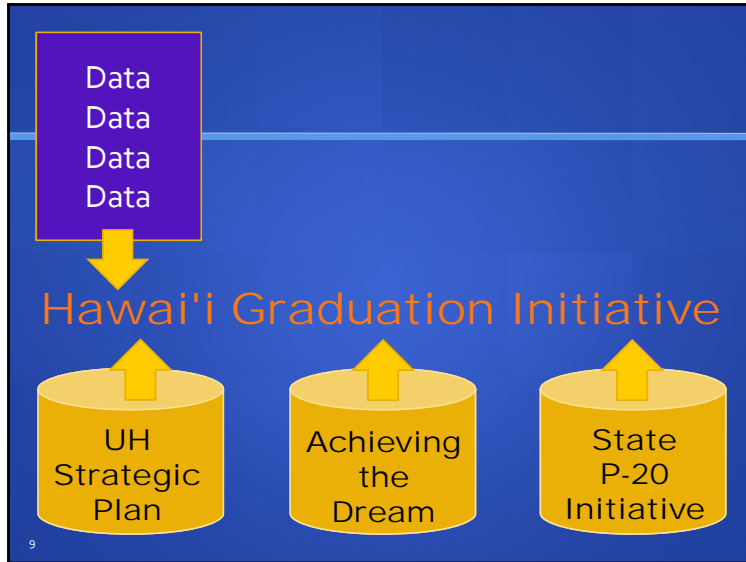
7

Increase graduates by 25% by 2015

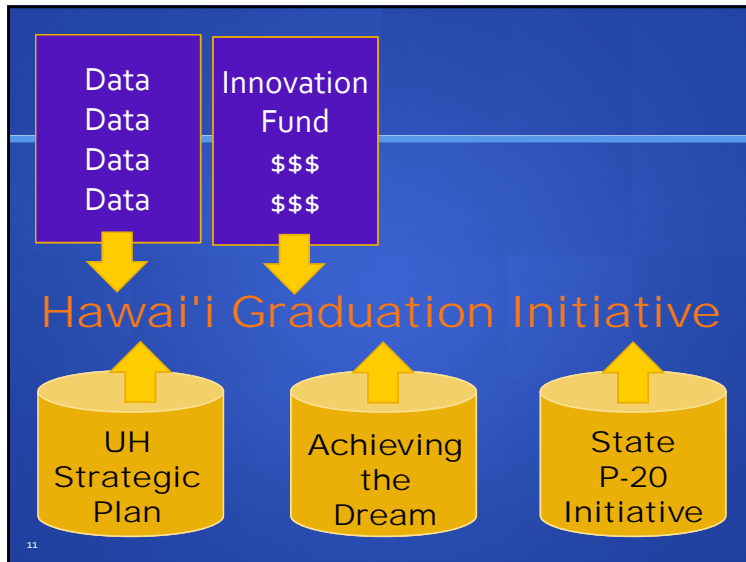
Hawai'i Graduation Initiative



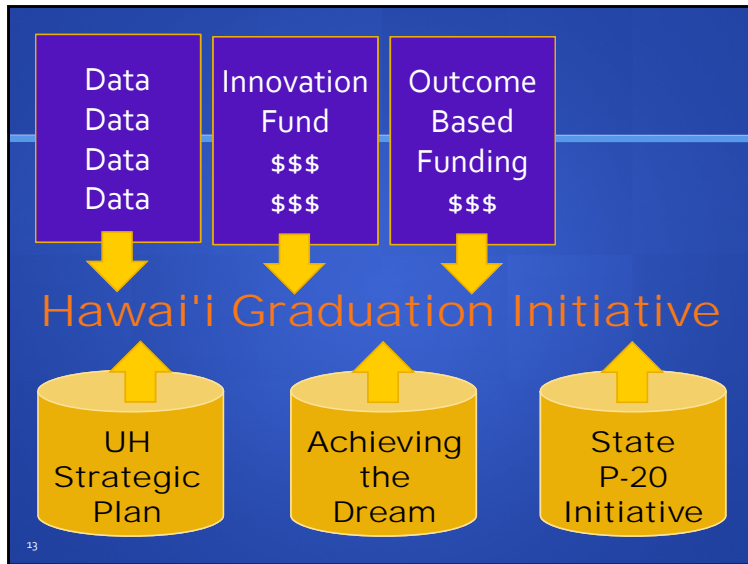
8



- ## Data
- Display Data
 - ✓ Everything is public
 - Discuss Data
 - ✓ Once a semester open meetings
 - ✓ Comparison is OK!
 - Develop Data
 - ✓ State Longitudinal Data System
 - Deepen Data
 - ✓ Predictive Analytics Reporting Framework
 - ✓ Just in Time Degree Advising Information
- 10



- ## Innovation Fund
- \$1.5M/year through internal reallocation
 - ✓ \$400K for remedial/developmental ed
 - ✓ \$400K for other student success pilots
 - ✓ \$250K for financial aid improvements
 - ✓ \$450K for other improvements
 - All funded projects measured in terms of outcomes
 - Funding survived budget reductions
- 12



13

Outcome Based Funding

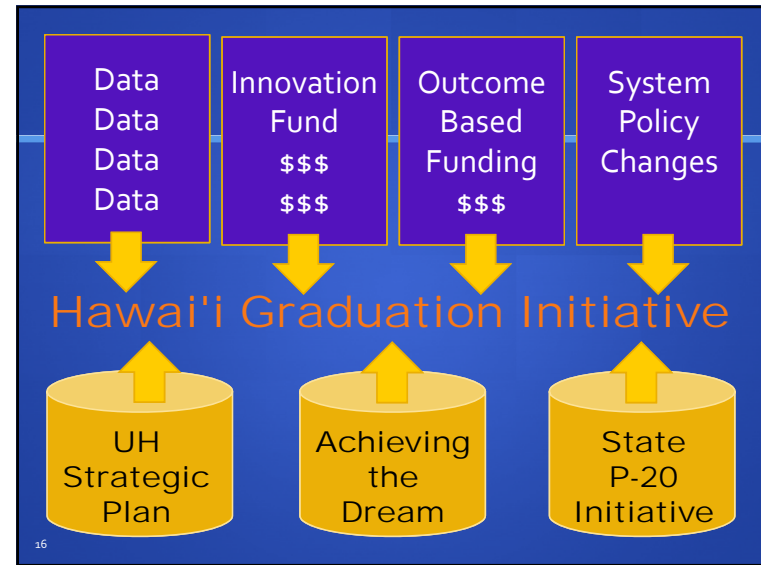
- Study Initiated by State Legislature
- Alignment with Hawai'i Graduation Initiative
- Adopted by Board of Regents as Priority Budget Item
- Positive Legislative Response But No New Money
- Community Colleges Used Formula for Allocation of \$3M ARRA Replacement Funds

14

Outcome Based Funding

Outcome Measure	Weight
Number of Graduates	35%
Native Hawaiian Graduates	10%
STEM Graduates	5%
Pell Grant Recipients	10%
Transfers to UH Baccalaureate	40%

15



16

System Policy Changes

- **Change in University Mission**

As the only provider of public higher education in Hawai'i, the University embraces its unique responsibilities to the indigenous people in Hawai'i and to Hawai'i's indigenous language and culture. To fulfill this responsibility, the University ensures active support for the participation of Native Hawaiians at the University and supports vigorous programs of study and support for the Hawaiian language, history and culture.

17

System Policy Changes

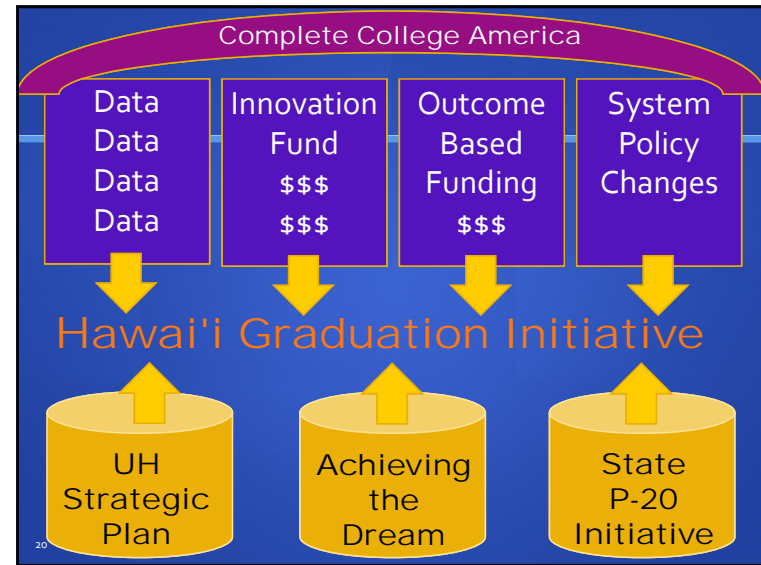
- **Change in University Mission**
- **Compass Placement Retake Policy**
 - ✓ 40-60% of retake students move up; success in higher course = or > regular students
- **Executive Evaluation Policy**
 - ✓ Now includes outcome attainment

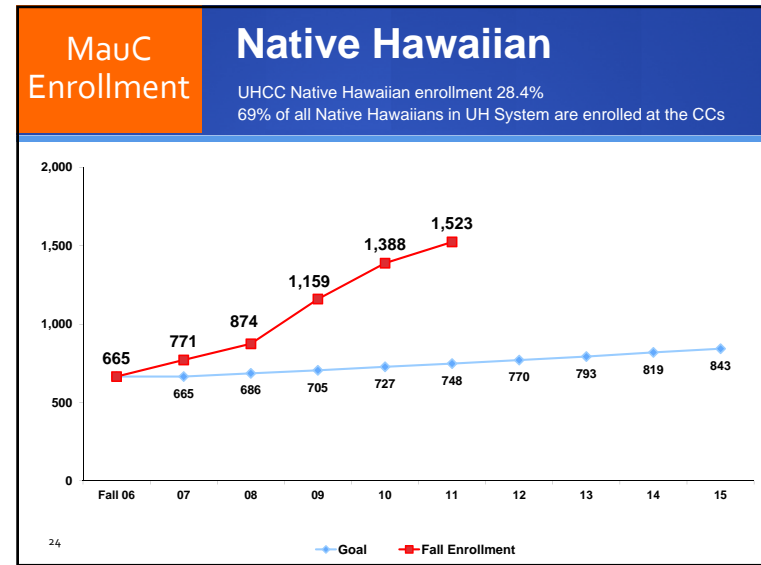
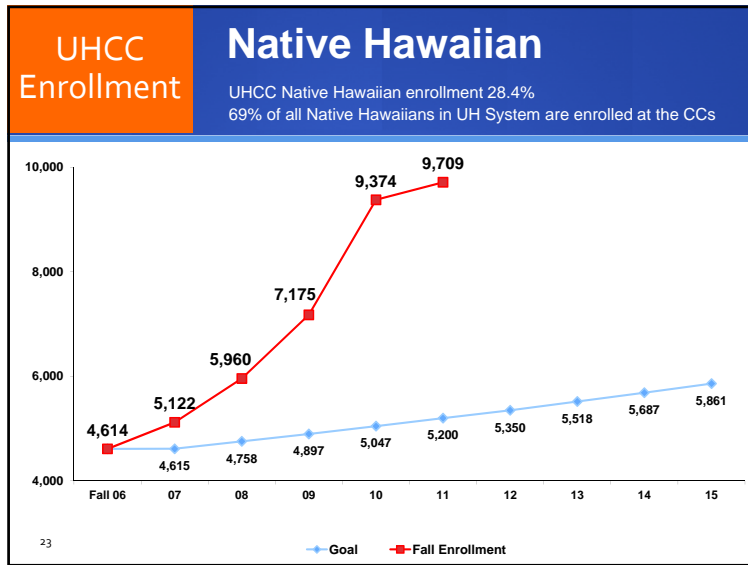
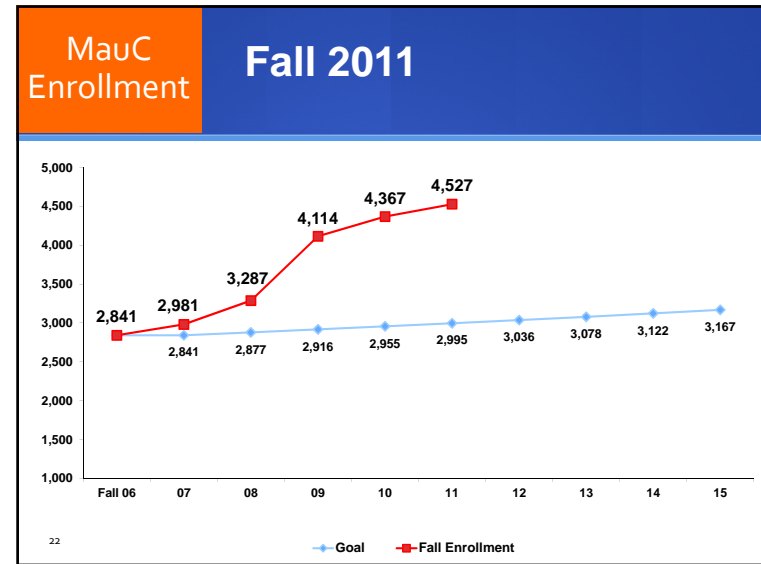
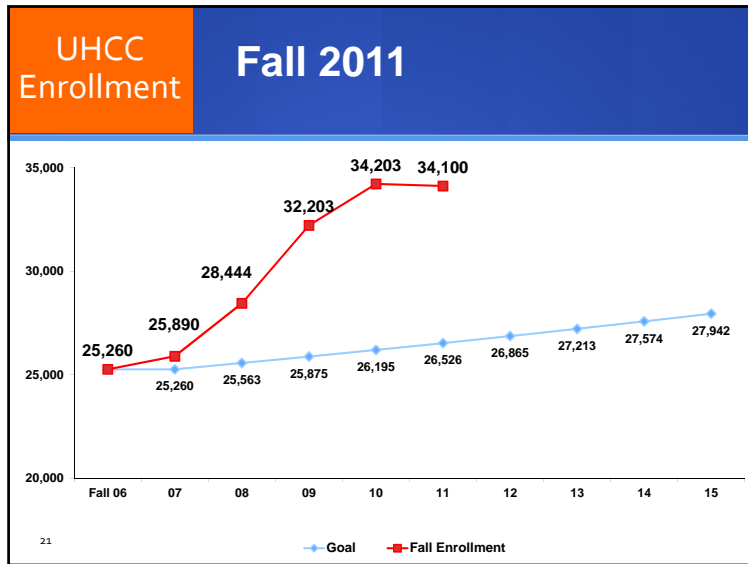
18

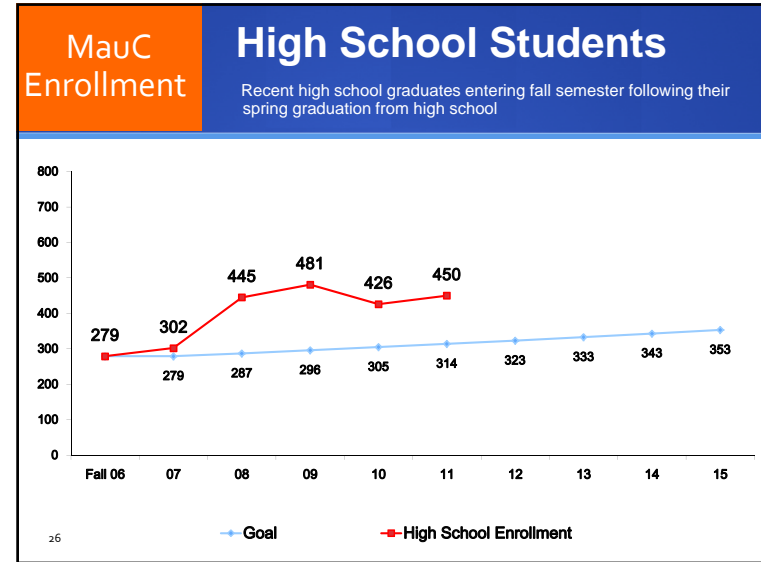
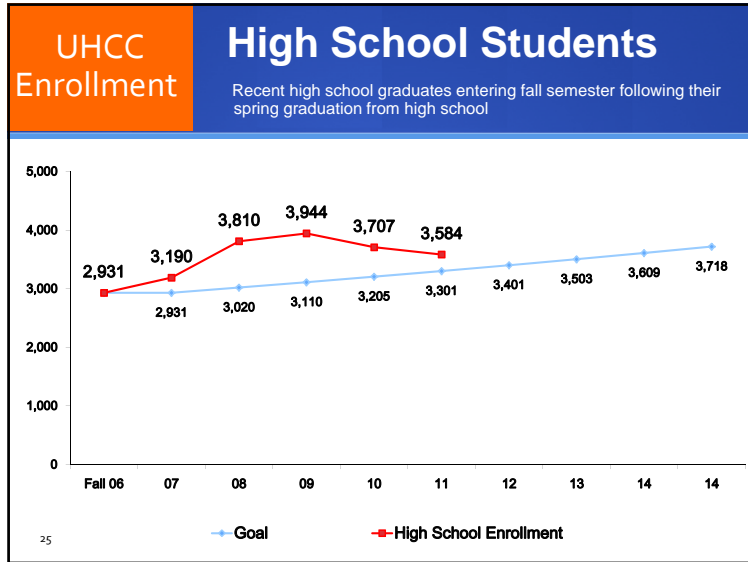
Complete College America

- **Increased Focus on Transfer**
 - ✓ Automatic Admission
 - ✓ Reverse Transfer
 - ✓ Dual Enrollment
 - ✓ Time to Completion

19





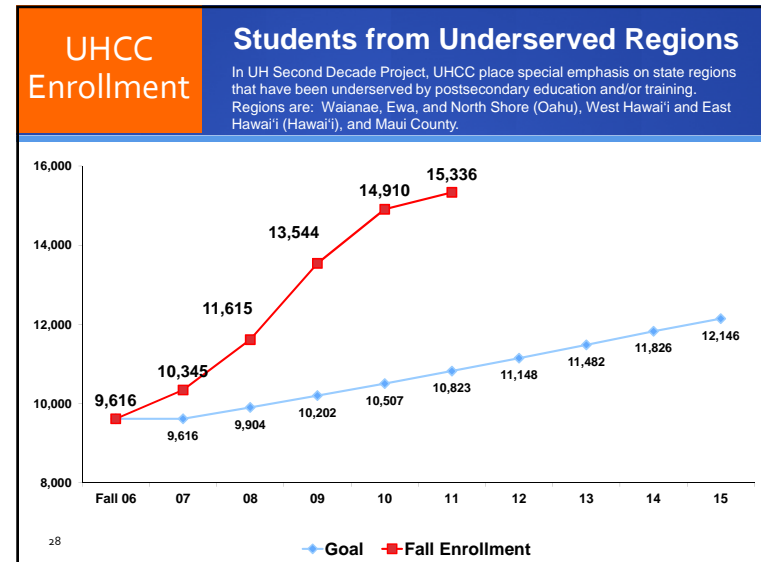


UHCC Enrollment Fall 2011 High School

Recent high school graduates entering fall semester following their spring graduation from high school

Campus	# Over Goal	% Over Goal
MauC	136	43.3%
HawCC	101	27.6%
LeeCC	78	8.7%
KapCC	2	0.3%
KauCC	<3>	<1.5%>
WinCC	<12>	<4.8%>
HonCC	<19>	<3.9%>

27



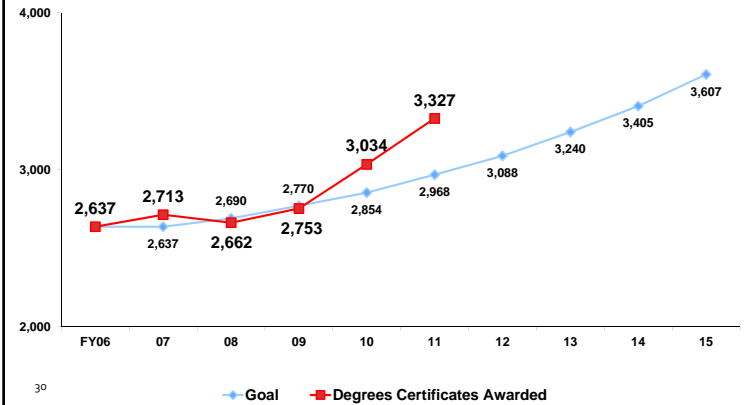


Performance Funding Measures

- Degrees and Certificates Achievement
- Native Hawaiian Degrees and Certificates Achievement
- STEM Degrees and Certificates Achievement
- Pell Recipients
- Transfers to UH 4-Year Institutions

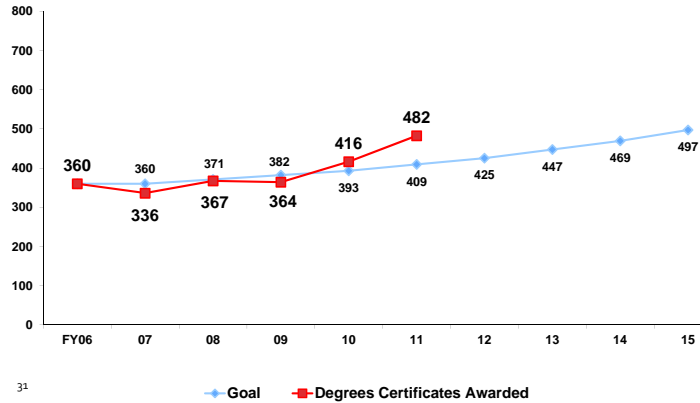
29

UHCC Performance: All Students Degrees & Certificates Achievement



30

MauC Performance: All Students Degrees & Certificates Achievement



31

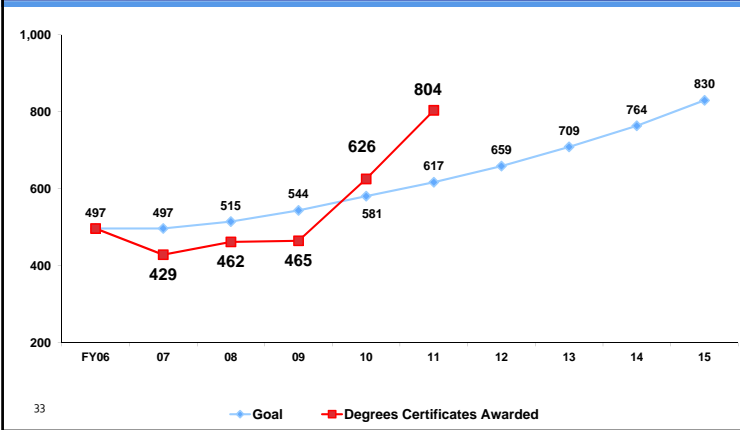
UHCC Performance: All Students Degrees & Certificates Achievement

Campus	# Over Goal	% Over Goal
KapCC	123	16.9%
KauCC	78	60.0%
MauC	73	17.8%
LeeCC	51	8.4%
HawCC	31	8.3%
WinCC	12	7.8%
HonCC	<9>	<1.6%>

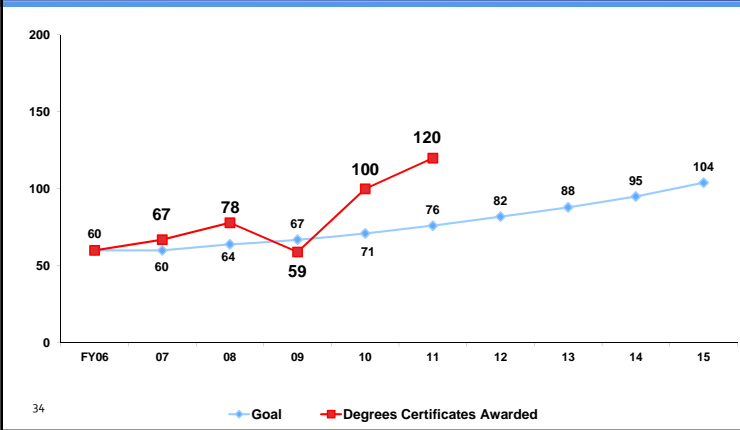
32

2010-2011

UHCC Performance: Native Hawaiians Degrees & Certificates Achievement



MauC Performance: Native Hawaiians Degrees & Certificates Achievement

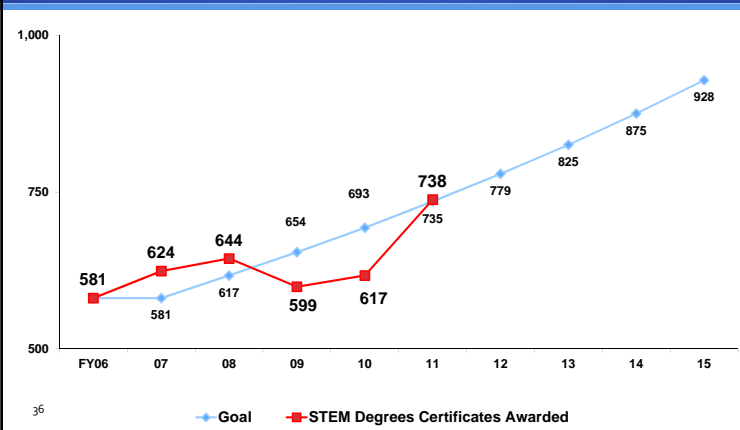


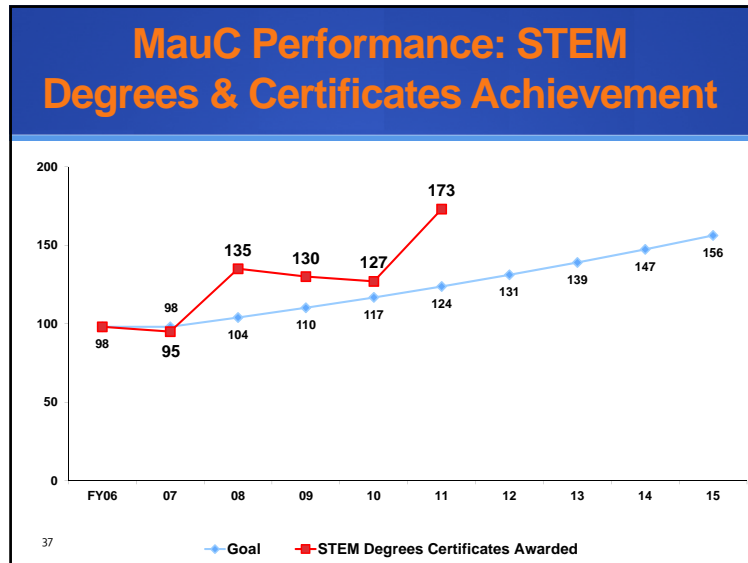
UHCC Performance: Native Hawaiians Degrees & Certificates Achievement

Campus	# Over Goal	% Over Goal
LeeCC	60	56.6%
MauC	44	57.9%
KapCC	38	49.4%
HonCC	14	10.6%
KauCC	13	44.8%
HawCC	10	7.0%
WinCC	8	14.8%

2010-2011

UHCC Performance: STEM Degrees & Certificates Achievement



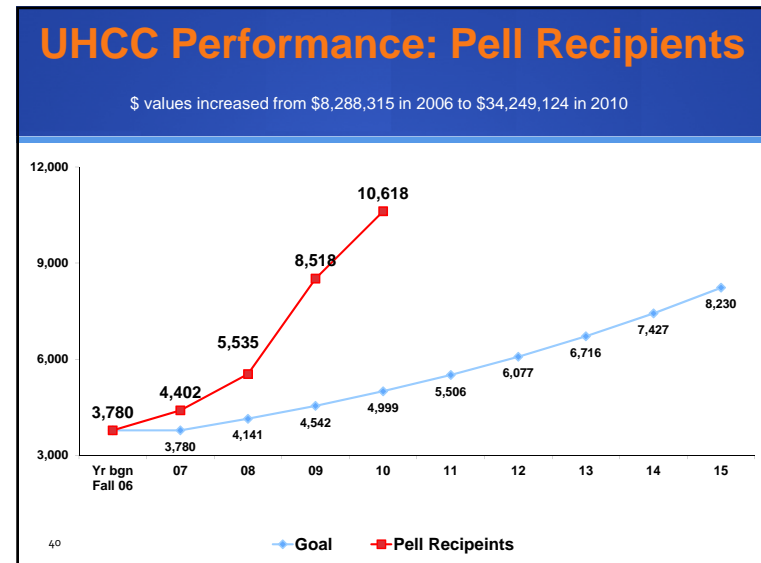
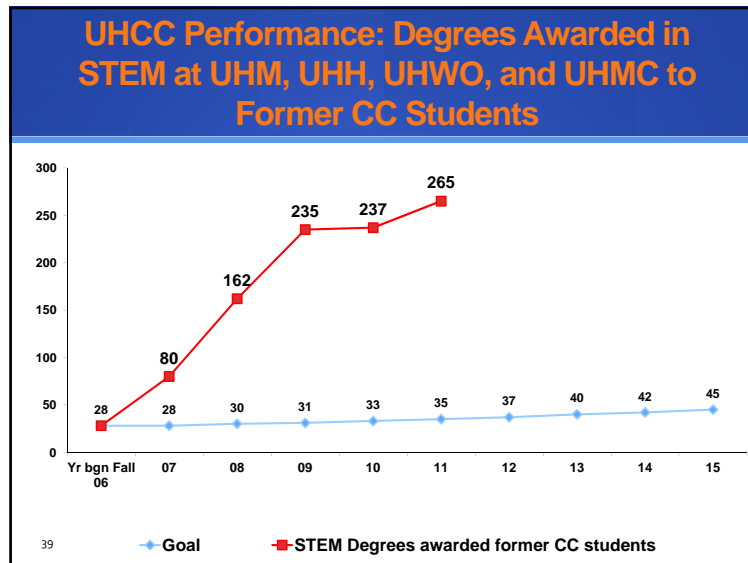


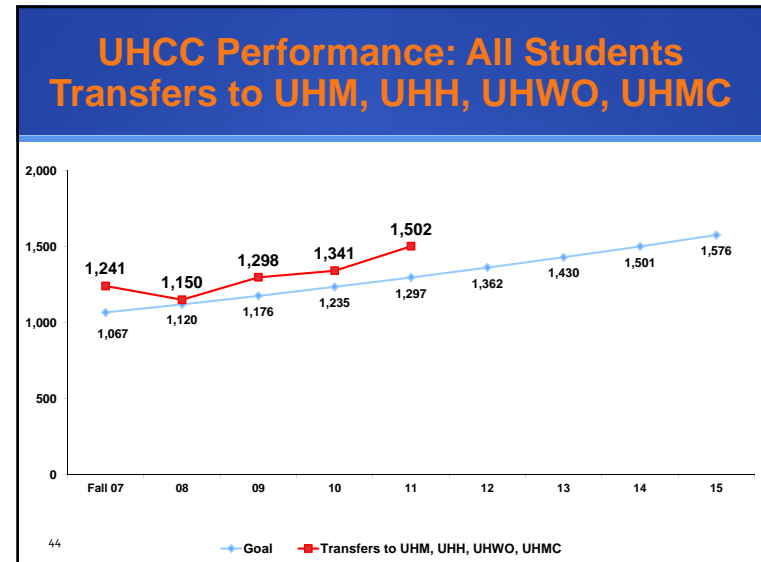
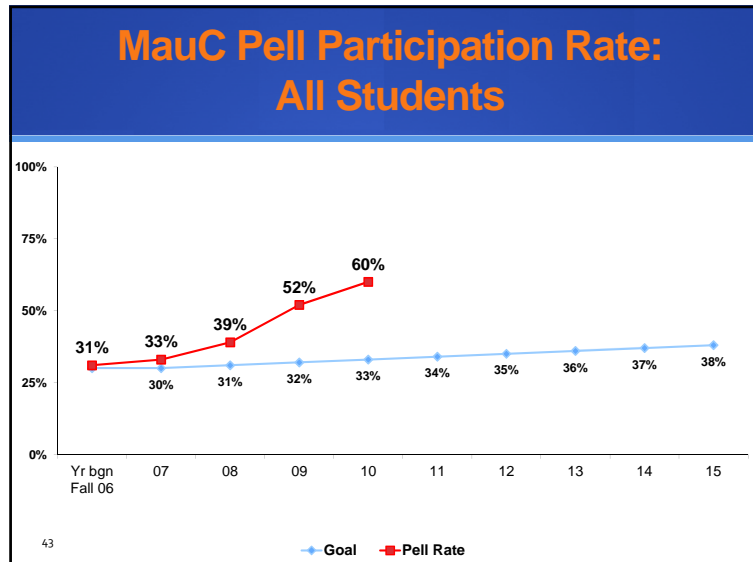
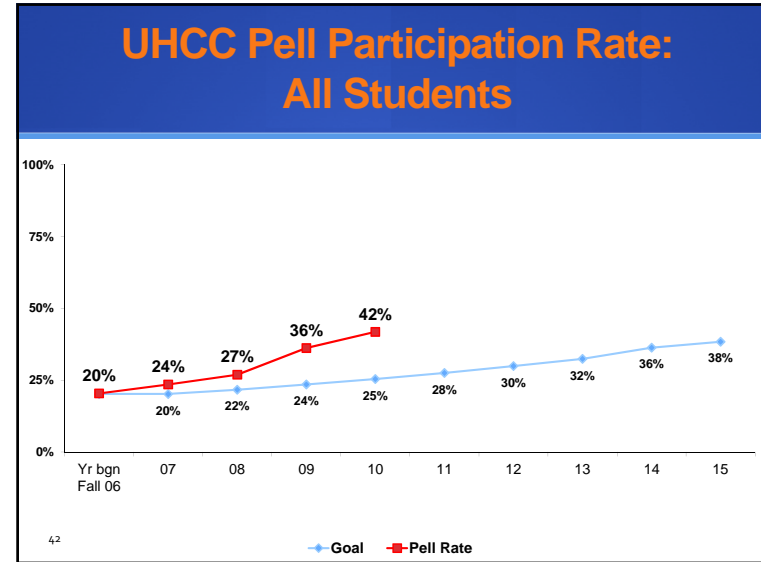
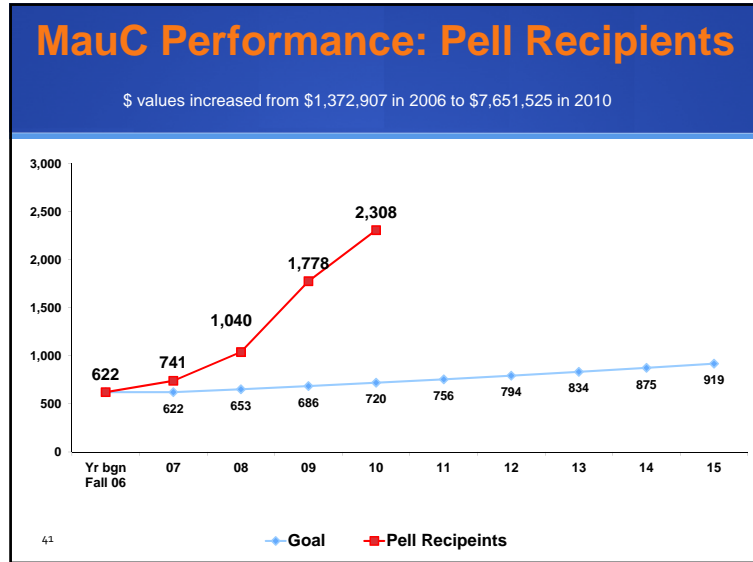
UHCC Performance: STEM Degrees & Certificates Achievement

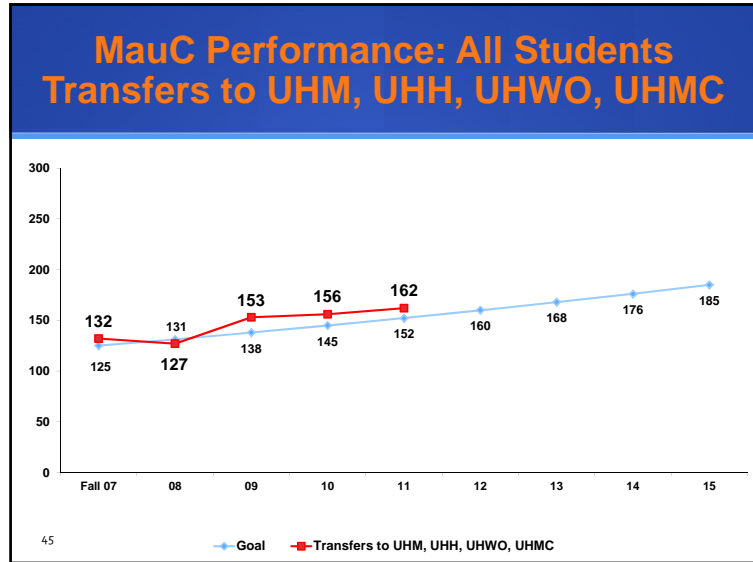
Campus	# Over Goal	% Over Goal
MauC	49	39.5%
KauCC	24	53.3%
WinCC	8	800.0%
LeeCC	2	66.7%
HawCC	<4>	<5.6%>
KapCC	<30>	<11.2%>
HonCC	<46>	<20.6%>

38

2010-2011





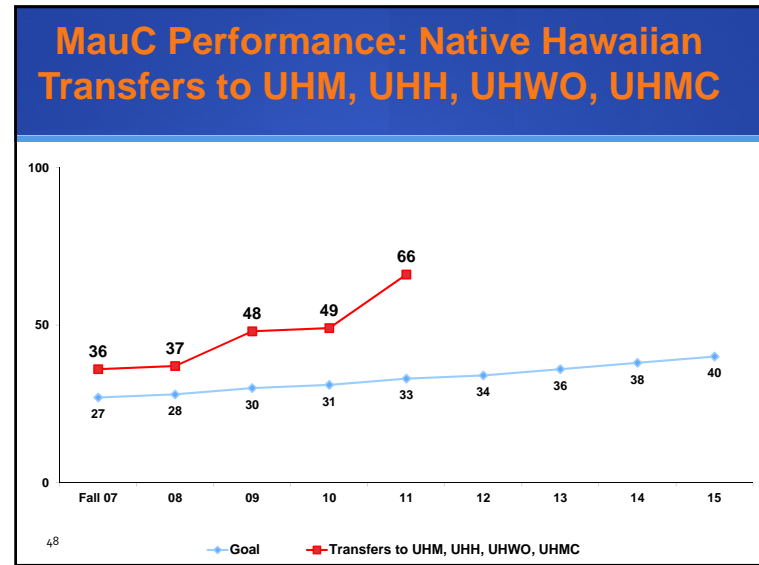
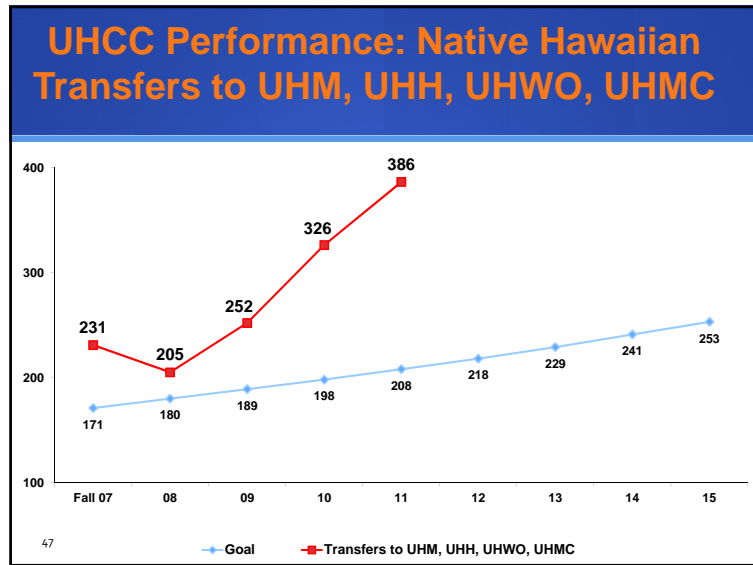


UHCC Performance: All Students Transfers to UHM, UHH, UHWO, UHMC

Campus	# Over Goal	% Over Goal
KapCC	100	25.1%
LeeCC	70	20.9%
WinCC	58	58.0%
HawCC	54	38.3%
HonCC	45	30.0%
KauCC	16	35.6%
MauC	10	6.6%

Fall 2011

46



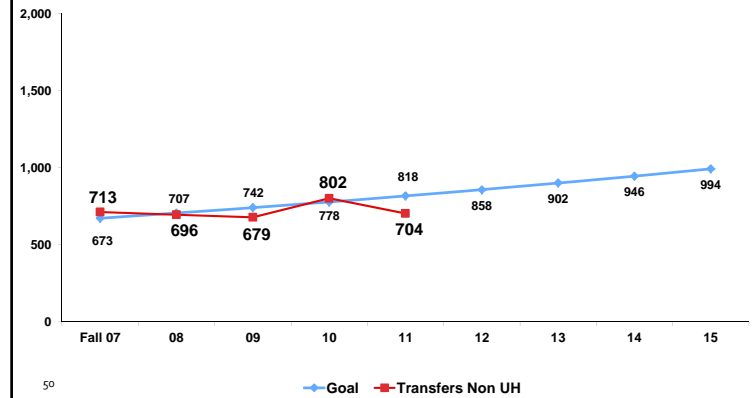
UHCC Performance: Native Hawaiian Transfers to UHM, UHH, UHWO, UHMC

Campus	# Over Goal	% Over Goal
HawCC	44	146.7%
KapCC	44	146.7%
WinCC	40	142.9%
MauC	33	100.0%
HonCC	24	150.0%
LeeCC	23	34.3%
KauCC	12	240.0%

Fall 2011

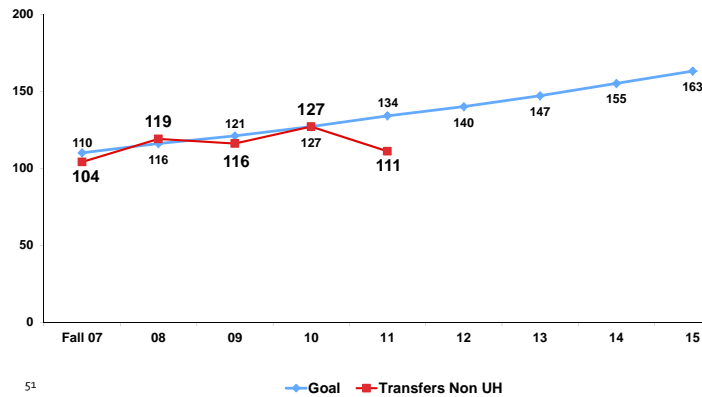
49

UHCC Performance: All Students Transfers to Non-UH



50

MauC Performance: All Students Transfers to Non-UH



51

Top Ten Institutions Receiving UHCC Transfers

Institution	Transfers
Chaminade University Of Honolulu (HI)	93
University Of Phoenix (AZ)	76
College Of Southern Nevada (NV)	31
Ashford University (IA)	13
University Of Nevada Las Vegas (NV)	13
Oregon State University (OR)	13
Argosy University - Honolulu (HI)	12
Academy Of Art University (CA)	11
University Of Washington - Seattle (WA)	10
Embry-Riddle Aeronautical Univ.-Worldwide Campus (FL)	10

Fall 2011

HPU does not participate in ClearingHouse

52

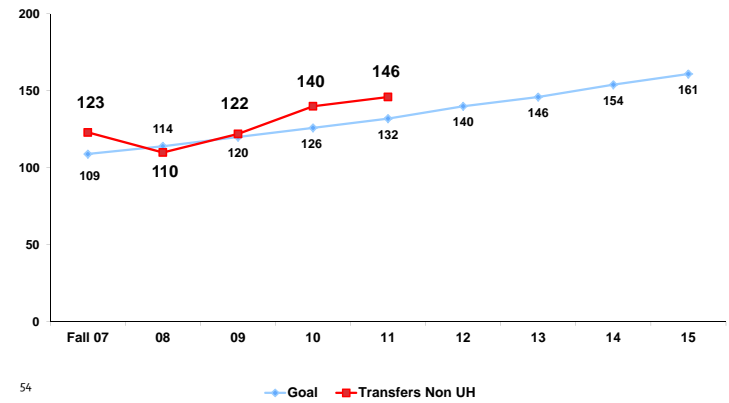
UHCC Performance: All Students Transfers to Non-UH

Campus	# Over Goal	% Over Goal
HawCC	11	23.9%
LeeCC	6	3.0%
KauCC	<15>	<30.6%>
WinCC	<16>	<23.2%>
KapCC	<21>	<10.9%>
MauC	<23>	<17.2%>
HonCC	<54>	<43.2%>

Fall 2011

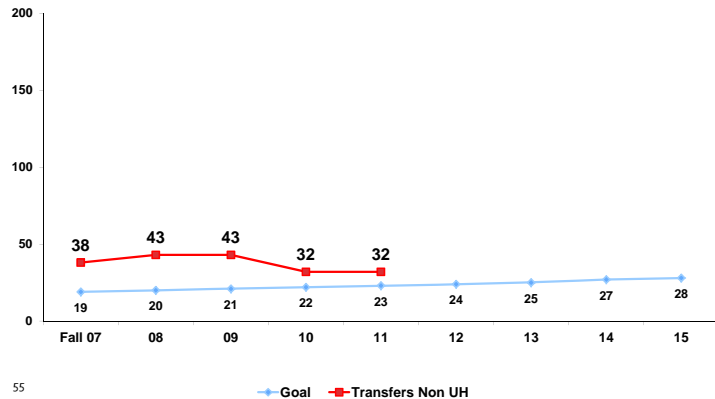
53

UHCC Performance: Native Hawaiian Transfers to Non-UH



54

MauC Performance: Native Hawaiian Transfers to Non-UH



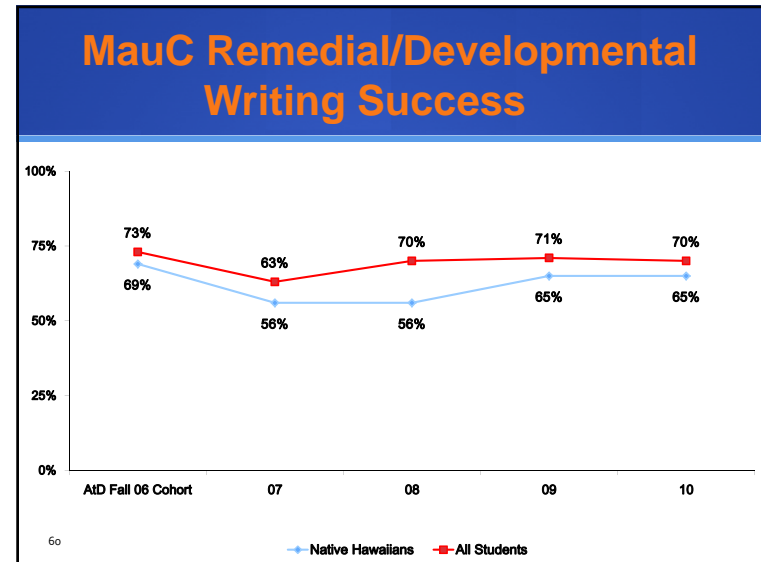
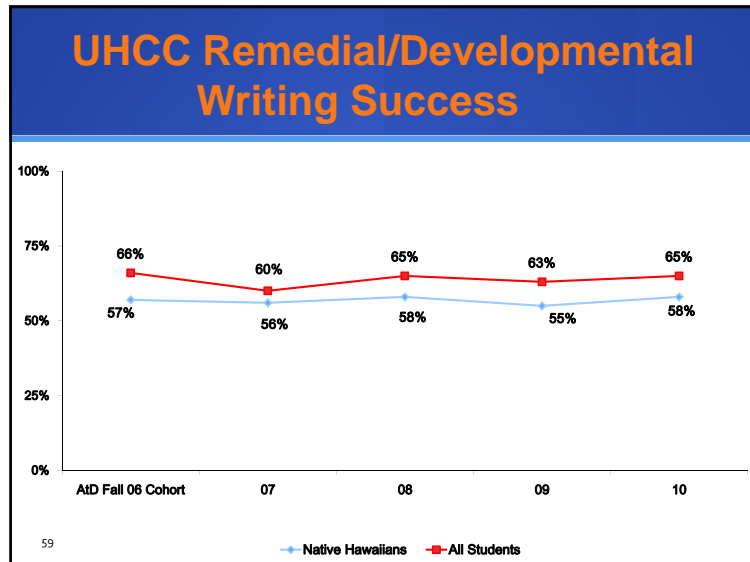
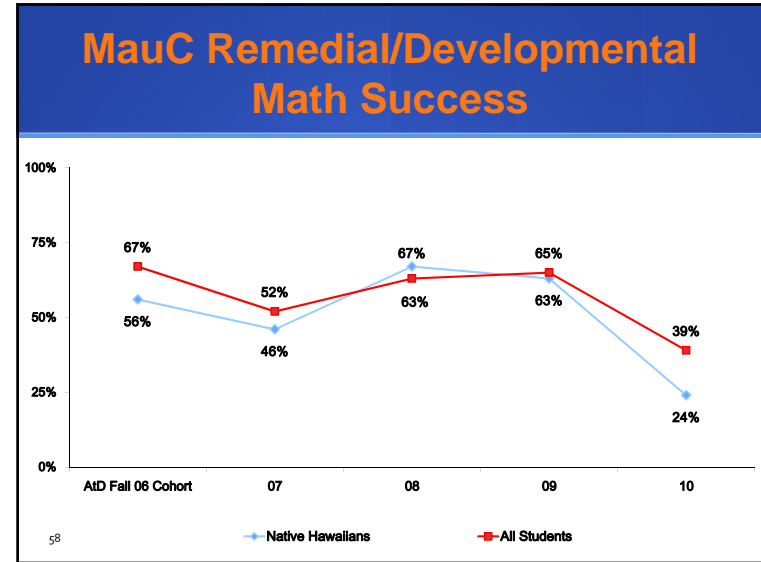
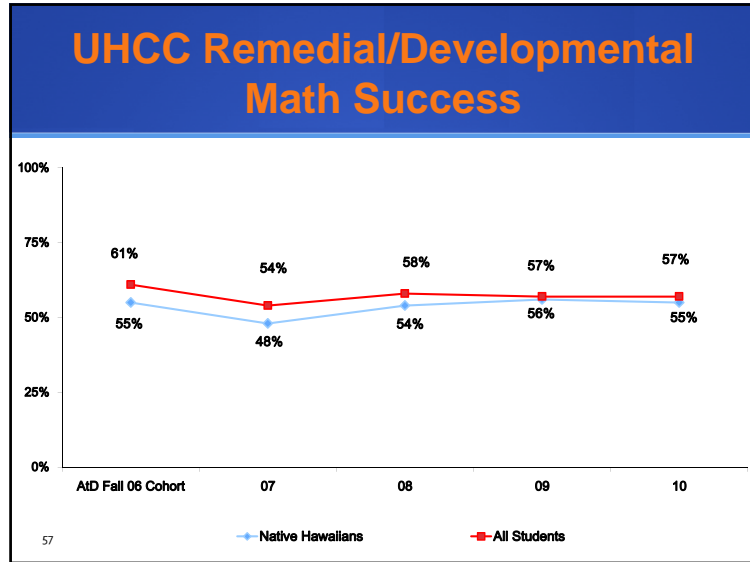
55

UHCC Performance: Native Hawaiian Transfers to Non-UH

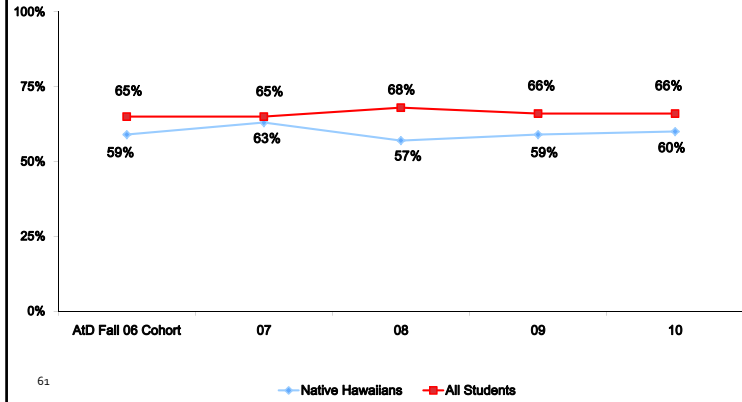
Campus	# Over Goal	% Over Goal
LeeCC	10	33.3%
MauC	9	39.1%
KapCC	4	13.8%
HawCC	2	28.6%
WinCC	<2>	<11.8%>
HonCC	<4>	<23.5%>
KauCC	<4>	<44.4%>

Fall 2011

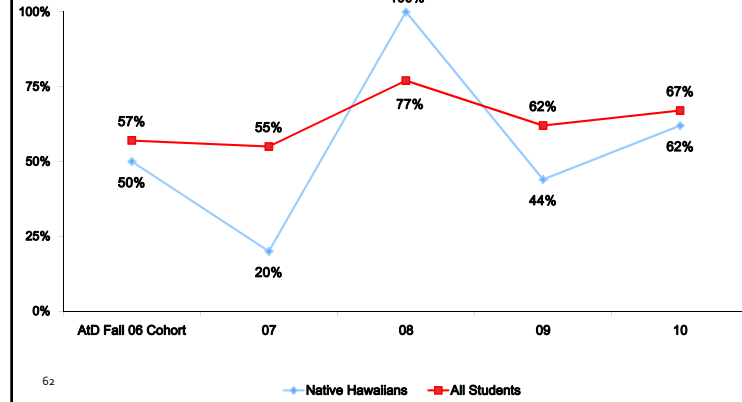
56



UHCC Remedial/Developmental Reading Success



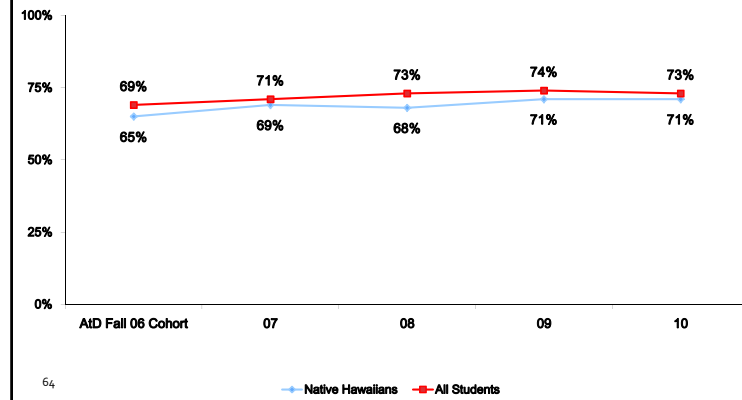
MauC Remedial/Developmental Reading Success

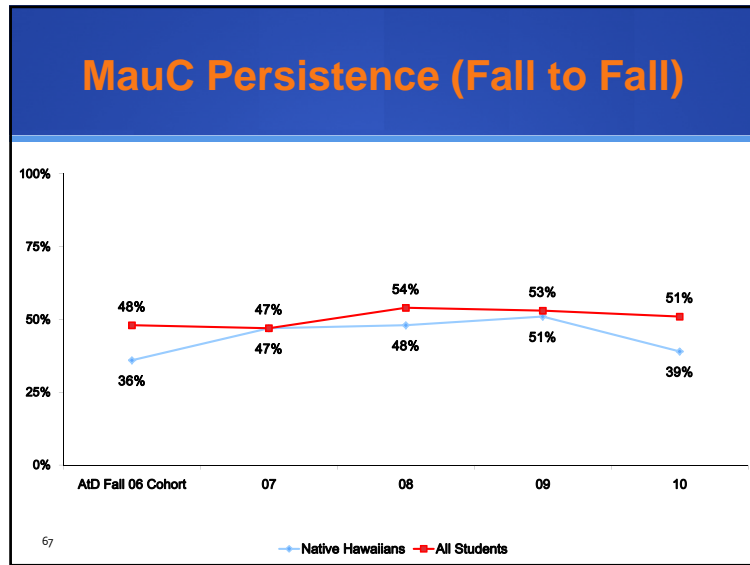
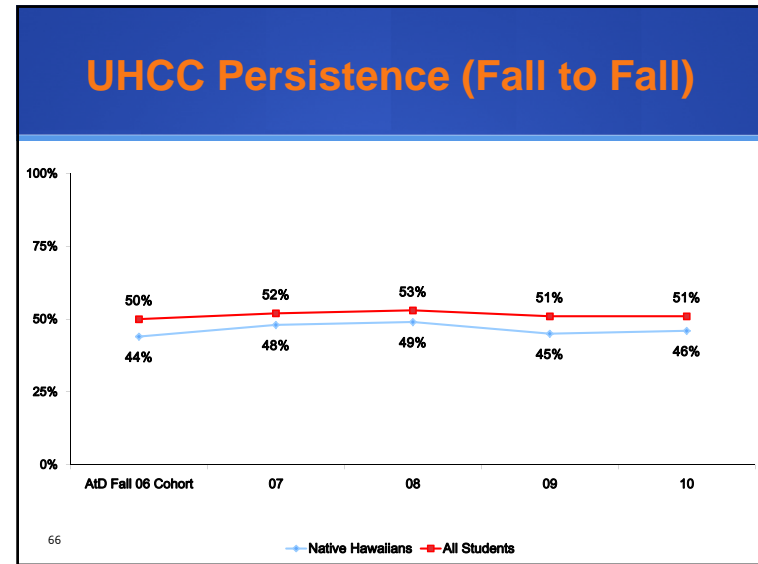
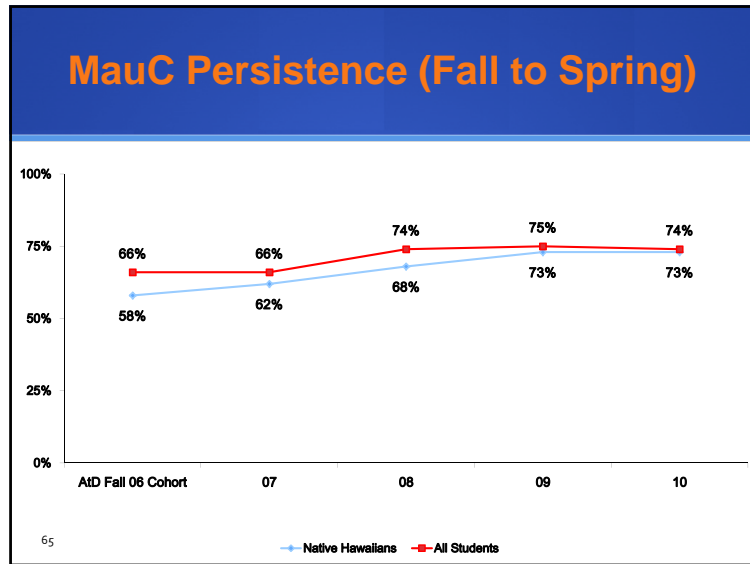


UHCC Remedial/Developmental Success: AtD Fall 2010 Cohort

	Math		Writing		Reading	
	All	NH	All	NH	All	NH
HawCC	72%	71%	52%	46%	70%	66%
HonCC	46%	44%	65%	63%	n/a	n/a
KapCC	57%	52%	68%	59%	54%	38%
KauCC	58%	52%	73%	57%	50%	41%
LeeCC	62%	60%	70%	65%	73%	63%
MauC	39%	24%	70%	65%	67%	62%
WinCC	61%	59%	55%	49%	46%	40%

UHCC Persistence (Fall to Spring)





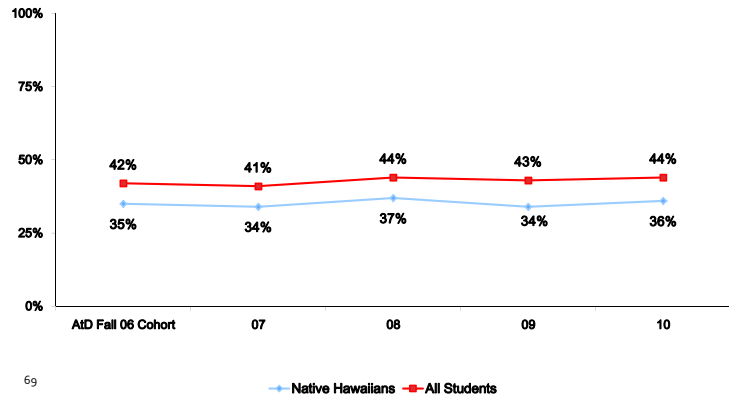
UHCC Persistence Fall AtD 2010 Cohort

	Fall to Spring		Fall to Fall	
	All	NH	All	NH
HawCC	76%	72%	49%	46%
HonCC	70%	67%	46%	38%
KapCC	74%	72%	53%	50%
KauCC	70%	69%	48%	52%
LeeCC	75%	69%	55%	49%
MauC	74%	73%	51%	40%
WinCC	69%	70%	50%	46%

68

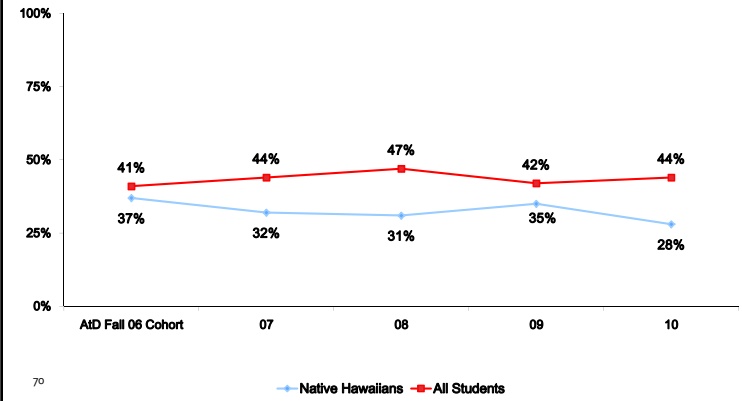
UHCC First Year Success: Full-Time

AtD Cohort Full-Time in Fall who complete 20 Credits in first year with GPA at least 2.0



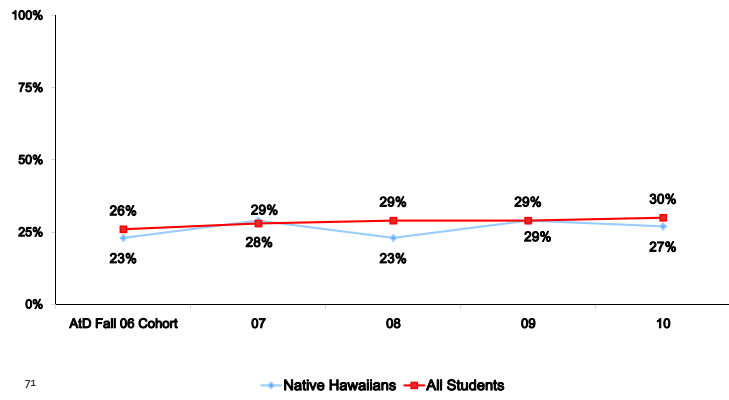
MauC First Year Success: Full-Time

AtD Cohort Full-Time in Fall who complete 20 Credits in first year with GPA at least 2.0



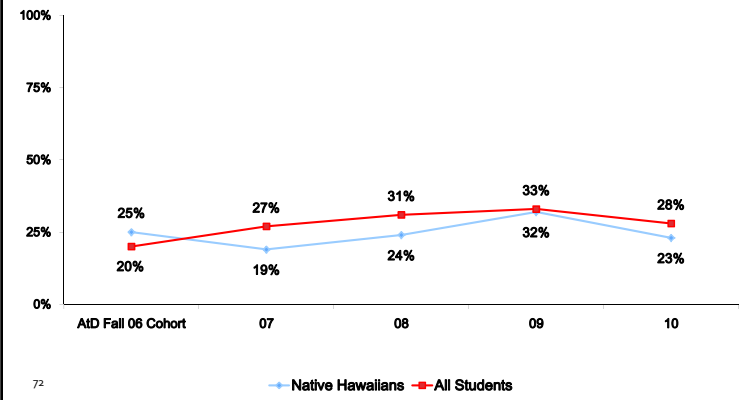
UHCC First Year Success: Part-Time

AtD Cohort Part-Time in Fall who complete 12 Credits in first year with GPA at least 2.0



MauC First Year Success: Part-Time

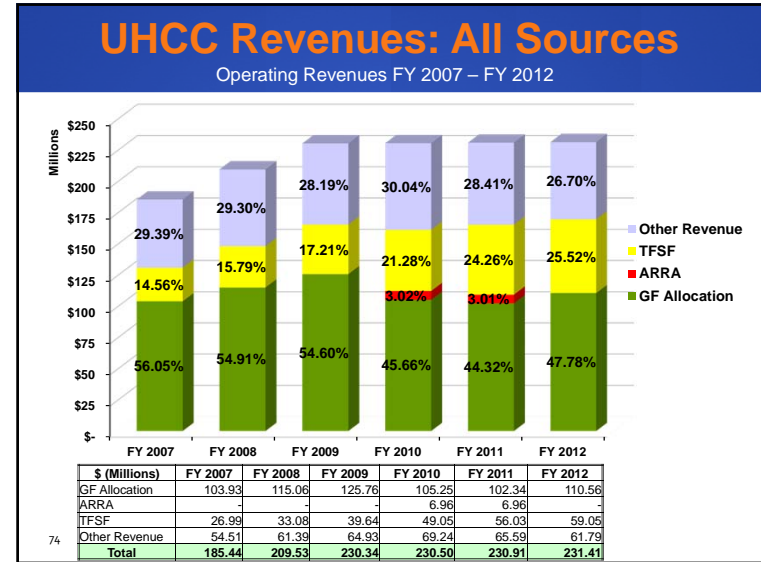
AtD Cohort Part-Time in Fall who complete 12 Credits in first year with GPA at least 2.0



UHCC First Year Success

	Full-Time		Part-Time	
	All	NH	All	NH
HawCC	47%	42%	31%	26%
HonCC	40%	30%	30%	30%
KapCC	48%	42%	30%	27%
KauCC	49%	42%	28%	19%
LeeCC	43%	34%	33%	29%
MauC	44%	28%	28%	23%
WinCC	40%	35%	29%	25%

73



74

Success is What Counts
The Journey Continues

UNIVERSITY of HAWAII
COMMUNITY COLLEGES

75